

Application Information for Postgraduate Programs at SEU (2024)

Qualification

1. Applicants must be non-Chinese citizens;

2. Academic Background and age limit:

Applicants for a master's degree must have acquired their bachelor degrees.

Applicants for a PhD degree must have acquired their master degrees.

Application Period

Jan. 1, 2024– May 15, 2024

Tuition (in RMB)

	Master's	Ph.D's
Liberal Arts	18,000/year	28,000/year
Engineering	23,000/year	33,000/year
Medicine	30,000/year	50,000/year

English-taught Master's Programs: 30,000 – 40,000/year

Estimated Other Fees(in RMB): Application Fee of 400, Insurance Fee of 800/year, 6000-8000/year for one occupancy in a room for two occupancies.

Programs

Master's Degree		
School/College/Dept.	Specialty	Duration (years)
School of Architecture	Architecture	3
	Architecture (English-taught)	3
	Urban Planning	3
	Architecture (Professional Degree)	3
	Urban Planning (Professional Degree)	3
	Landscape Architecture (Professional Degree)	3
School of Mechanical Engineering	Mechanical Engineering	3
	Designing	3

	Machinery (Professional Degree)	3
School of Energy & Environment	Power Engineering and Engineering Thermophysics	3
	Power Engineering and Engineering Thermophysics (English-taught)	3
	Environmental Science & Engineering (English-taught)	3
	Engineering of Heating, Gas, Ventilation & Air-conditioning	3
	Environmental Science & Engineering	3
School of Information Science & Engineering	Circuits & Systems	3
	Technology of Electromagnetism & Microwaves	3
	Information & Communication Engineering	3
	Electronical and Communication Engineering (English-taught)	3
	One-Belt-One-Road in Electronics and Information (English-taught, YES-CHINA)	2
School of Civil Engineering	Mechanics	3
	Mechanics (English-taught)	3
	Civil Engineering	3
	Civil Engineering (English-taught)	3
	Municipal Engineering	3
	Civil Engineering & Management	3
	Management Science and Engineering	3
School of Electronic Science & Engineering	Optical Engineering	3
	Electronic Science and Technology	3
	Electronic Science and Technology (English-taught)	3
School of Mathematics	Mathematics	3
	Statistics	3
	Applied Statistics (Professional Degree)	3
	System Science	3
School of Automation	Control Science and Engineering	3
	Control Science and Engineering (English-taught)	3
School of Computer Science & Engineering	Computer Science and Technology	3
	Software Engineering	3

	Intelligent Science and Technology	3
	Artificial Intelligence (Professional Degree)	3
School of Physics	Physics	3
School of Biological Science and Medical Engineering	Education	3
	Biological & Medical Engineering	3
	Science and Technology Education (Professional Degree)	3
School of Material Science and Engineering	Materials Science & Engineering	3
School of Economics & Management	Applied Economics	3
	Management Science & Engineering	3
	Business Administration	3
	Accounting	3
	International Business/International Trade (English-taught)	2
	Finance (Professional Degree)	3
	Asset Management (Professional Degree)	3
	Accounting (Professional Degree)	3
	Logistics Engineering and Management (Professional Degree)	3
	Information Resources Management	3
School of Electrical Engineering	Electrical Engineering	3
	Electrical Engineering (English-taught)	3
School of Foreign Languages	English Language and Literature	3
	Japanese Language and Literature	3
	Russian Language and Literature	3
	Linguistics and Applied Linguistics in Foreign Languages	3
	Inter-translation between Chinese and Japanese (Professional Degree)	3
Department of Physical Education	Physical Education	3
School of Chemistry & Chemical Engineering	Chemistry	3
	Material Physics and Chemistry	3
	Chemical Engineering & Techniques	3
	Materials and Chemical Industry (Professional Degree)	3
School of Transportation	Geotechnical Engineering	3

	Bridge and Tunnel Engineering	3
	Surveying Science and Technology	3
	Transportation Engineering	3
	Transportation Engineering (English-taught)	3
	Intelligent Transportation and New Transportation Infrastructure (English-taught, YES-CHINA)	2
School of Instrument Science & Engineering	Instrumental Science & Technology	3
	Navigation, Guidance and Control	3
Law School	Law	3
School of Life Science and Technology	Biology	3
	Biology (English-taught)	3
School of Public Health	Public Health and Preventive Medicine	3
	Public Health (English-taught)	2
	Public Health (Professional Degree)	3
	Social Security	3
	Public Health in Global Health (English-taught, YES-CHINA)	2
Medical School	Basic Medicine	3
	Internal Medicine	3
	Internal Medicine (English-taught)	3
	Pediatrics	3
	Neurology	3
	Ophthalmology	3
	Otolaryngology	3
	Psychiatry and Mental Health	3
	Imaging and Nuclear Medicine	3
	Clinical Laboratory Diagnostics	3
	Surgery	3
	Obstetrics and Gynecology	3
	Oncology	3
	Rehabilitation Medicine	3
	Anesthesiology	3

	Emergency Medicine	3
	Critical Care Medicine	3
	Nursing	3
	Clinical Medicine (professional degree)	3
	Nursing (professional degree)	3
School of Marxism	Marxist Theory	3
School of Humanities	Philosophy	3
	Sociology	3
	Psychology	3
	International Chinese Language Education (professional degree)	3
	Applied Psychology	3
	Chinese Language and Literature	3
	Chinese History	3
	Tourism Management	3
	Science of Public Management	3
	Social Work (professional degree)	3
School of Arts	Art	3
	Designing	3
	Art and Calligraphy (professional degree)	3
School of Cyber Science and Engineering	Cyberspace Security	3
School of Integrated Circuits	Integrated Circuit Science and Technology	3

Doctoral Degree (Chinese or English)		
School/College/Dept.	Specialty	Duration (years)
School of Architecture	Architecture	4
	Urban Planning	4
	Landscape Architecture	4
School of Mechanical Engineering	Mechanical Engineering	4
School of Energy & Environment	Power Engineering & Engineering Thermophysics	4

	Engineering of Heating, Gas, Ventilation & Air-conditioning	4
	Environmental Science & Engineering	4
School of Information Science & Engineering	Circuits & Systems	4
	Technology of Electromagnetism & Microwaves	4
	Information & Communication Engineering	4
School of Civil Engineering	Mechanics	4
	Civil Engineering	4
	Municipal Engineering	4
	Civil Engineering (Civil Engineering & Management)	4
	Management Science and Engineering (Civil Engineering school)	4
School of Electronic Science & Engineering	Optical Engineering	4
	Electronic Science and Technology	4
School of Mathematics	Mathematics	4
School of Automation	Control Science and Engineering	4
School of Computer Science & Engineering	Computer Science & Technology	4
	Computer Science & Technology (Artificial Intelligence)	4
	Software Engineering	4
School of Physics	Physics	4
School of Biological Science and Medical Engineering	Biological & Medical Engineering	4
School of Material Science and Engineering	Material Science & Engineering	4
School of Economics & Management	Economics	4
	Finance	4
	Business Administration	4
	Management Science & Engineering	4
	Management Science & Engineering (Financial Engineering)	4

School of Electrical Engineering	Electrical Engineering	4
School of Foreign Languages	Foreign language and Literature	4
School of Chemistry & Chemical Engineering	Chemistry	4
	Materials Physics & Chemistry	4
	Chemical Engineering and Technology	4
School of Transportation	Geotechnical Engineering	4
	Bridge and Tunnel Engineering	4
	Transportation Engineering	4
	Transportation Engineering (Transportation Surveying and Information Technology)	4
School of Instrument Science & Engineering	Instrumental Science & Technology	4
	Navigation, Guidance and Control	4
Law School	Law	4
School of Life Science and Technology	Biology	4
School of Public Health	Public health and Preventive Medicine	4
	Public Management	4
Medical School	Preclinical Medicine	4
	Internal Medicine	4
	Psychiatry	4
	Imaging and Nuclear Medicine	4
	Clinical Laboratory Diagnostics	4
	Surgery	4
	Obstetrics and Gynecology	4
	Oncology	4
	Anesthesiology	4
	Clinical Medicine (Critical Care Medicine)	4
	Rehabilitation Medicine Physical Therapy	4
School of Marxism	Marxist Theory	4
School of Humanities	Philosophy	4
	Public Management	4
School of Arts	Art Theory	4

School of Cyber Science and Engineering	Cyberspace Security	4
--	---------------------	---

Application Materials

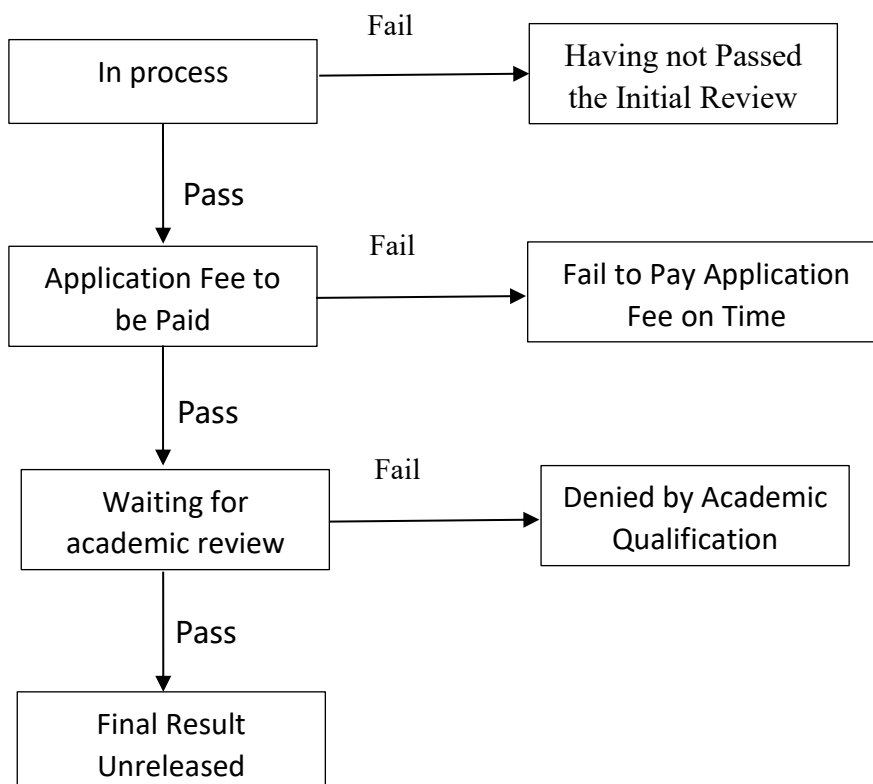
1. Passport (The valid period must be more than **one year**, if you're currently in china, please provide the copies of the first page and the latest **VISA/resident permit page**);
2. Certificate of Highest Degree;
3. If you are to obtain the higher level of degree before **September 30, 2024**, you may provide the official document to prove that;
4. Official Transcript of Academic Records;
5. HSK 4 and above is needed for most Chinese-taught Programs, HSK5 for Medical, Economics and International Chinese Language Education. Otherwise, one-year of language learning is required to obtain the certificate;
6. If English is not the native language or official language, you are required to provide TOEFL 80, IELTS 6.0 / Duolingo 100 for English-taught program.
7. Two Recommendation Letters;
8. Research Proposal no less than 800 words;
9. Certificate of Non-criminal Record;
10. Physical Examination Record within 6 months before the date of **Dec.1, 2023**;
11. Some programs may need other materials. (E.g. Architecture programs asks for the applicant's portfolio)

Note:

1. Please ensure the **completeness and accuracy** of the application information. All admission materials will be made based on the application information provided and will not be modified after completion.
2. Please ensure the **authenticity** of your application materials. If any untruthful content is found in the application materials, you will be disqualified and cannot apply to Southeast University again within 2 years;
3. The application documents must be **in Chinese or English**. Any documents in any other languages must be attached with a notarized English or Chinese translation;
4. Please fill in your **Chinese name** if you have one, it can't be changed after admission.
5. The **acceptance letter** from professor is not the document requested, but it will make your application more competitive;
6. Please be sure the **email address** you write on the application system is correct, if you're admitted, all the admission documents will be sent to this email.

Application Procedure

1. Apply on the SEU online application system <http://fs.seu.edu.cn/>;
2. If you want to apply for CSC scholarship, additionally you need to do the online application by <http://studyinchina.csc.edu.cn/>
(The application code of Southeast University / the agency number is **10286**, the program type is **B**);
3. After you complete the online application, you can log in <http://fs.seu.edu.cn/> to check your application status:



Admission

Step 1: For students who have passed all the reviews (the application status on the system will be “Final Result Unreleased”), you’ll be recommended for **Chinese Government Scholarship** or **SEU President Scholarship** according to the comprehensive selection;

Step 2: The financial status on the system will be “Self-financed” before the final result of the scholarship is decided, which will be released on our college website by <http://cis.seu.edu.cn/>;

Step 3: The admission documents will be emailed to the address which you fill in the system.

Registration

1. The time for registration is from late August to early September. The exact time will be confirmed on the admission notice.

2. You can apply for student (X1) visa at the Chinese Embassy or Consulate in your country on the strength of the **admission notice and JW201/JW202 form** (both in electronic copies).
3. Please note that you must register within the stipulated time stated on the Admission Notice with the copy of the **Admission Notice and JW202/JW201 form, the original receipt of the pre-paid tuition (for self-financed students)** together with **diploma, transcript and HSK/TOEFL/IELTS certificate**. Otherwise, you will be disqualified from enrollment.

Contact

Mailing address: College of International Students, Southeast University, 90 Chengxian Jie, Nanjing, China.

Post Code: 210018

Tel: 0086-25-83793022

Email: admission@seu.edu.cn

Fax: 0086-25-83792737

Website: <http://cis.seu.edu.cn>